

## COUNCIL REPORT

Meeting: 17<sup>th</sup> March 2021

---

### Summary of Meetings/Events Attended by Social Services Team to February 28<sup>th</sup>, 2020

- Introduction of Interim Director of Social Services – Sandi Churchill
  - Organisation of a handover from previous Director
- Aged Care – Quality Improvement plan follow-up with consultant
- Individual meetings with line managers
- Interagency Meeting – DATSIP
- Community Safety plan consultant update

### Summary of Current Activities.

- Annual Financial Acquittal Submitted– George Bowen Memorial Kindergarten
- Working with Vulnerable People Statement submitted
- Review of Continuous Improvement Plan and QIP for Nola’s Place Childcare Centre
- Development of Policy and Process for Transportation of children at Kindergarten and Childcare including: QLD transport, Licensing & Vehicle requirements – Vehicle has been modified to meet compliance needs and appropriate child restraints acquired. Policy Develop Draft completed review required – ongoing
- Recruitment for the following positions is underway
  - 1 Social Support Workers for CHSP (male identified)
  - 1 Social Support Workers for CHSP (female identified)
  - 1 x Administration Officer for CHSP

### Other Actions in Progress

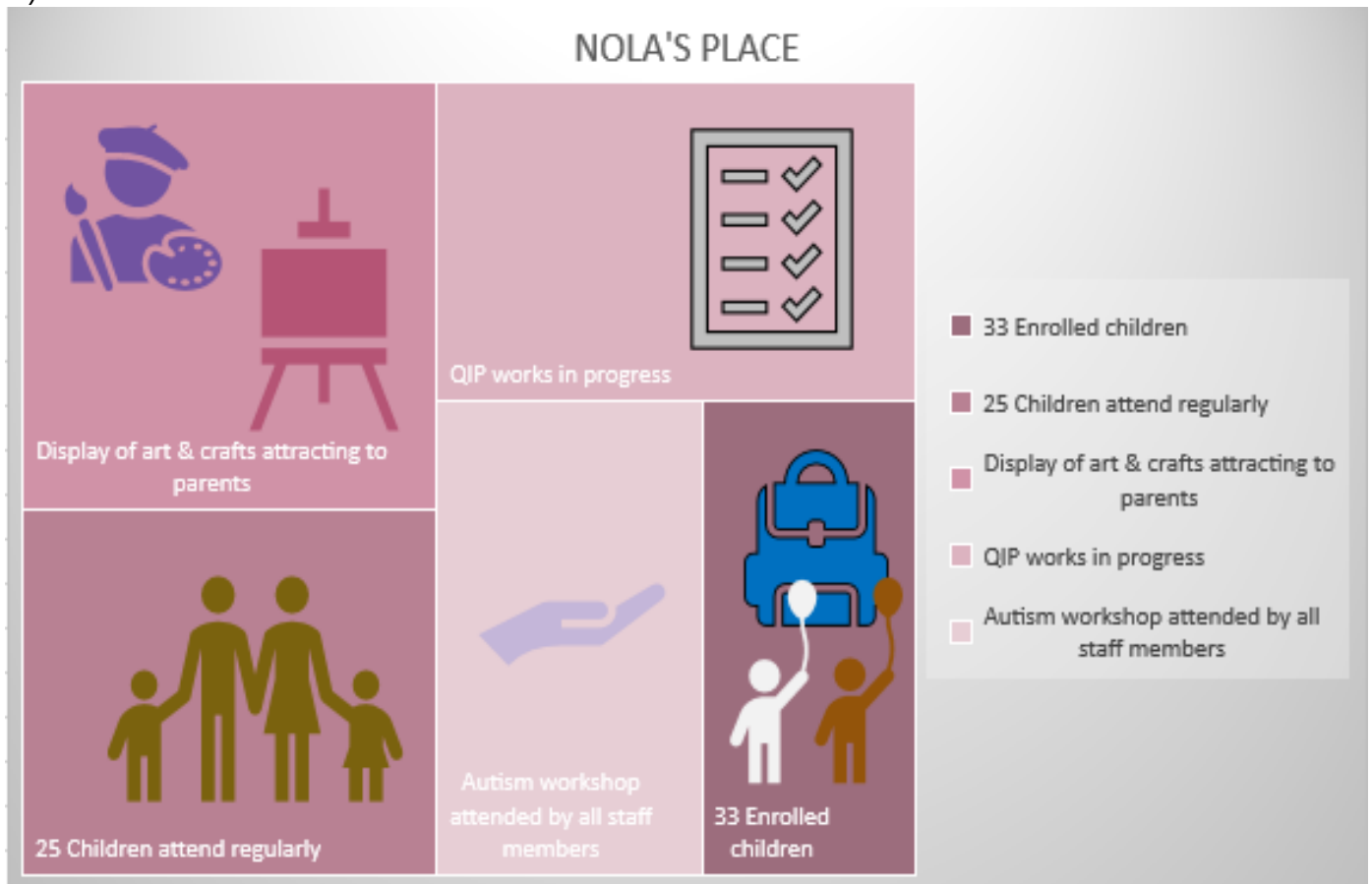
- Quality Improvement Plan for Nola’s Place – Internal Audit undertaken action plan in place
- Facilities Maintenance – Works orders and register are continuously updated to ensure the continuity of all services
- CHSP policies have been acquired and are now being customised to our service
- Aged Care Policies are in review and being customised to our service
- Information Management update to Aged Care
- Internal audit and self-assessment Aged Care Consultant
- Review of Quality Improvement Plan for Aged Care
- Information Systems update throughout Social Service Department

## Social Services Data

- 32 children enrolled at Nola's Place Childcare Centre
- 25 Students enrolled at George Bowen Memorial Kindergarten
- 5 residents with 1 pending application at the Aged Care Hostel
- 45 clients taken care by 7 support workers at CHSP
- 15 youth directly engaged in the service throughout February for the Youth Engagement Program
- Daily broadcast of important announcements when available from the Hope Vale Radiostation

### Nola' Place Child Care Centre

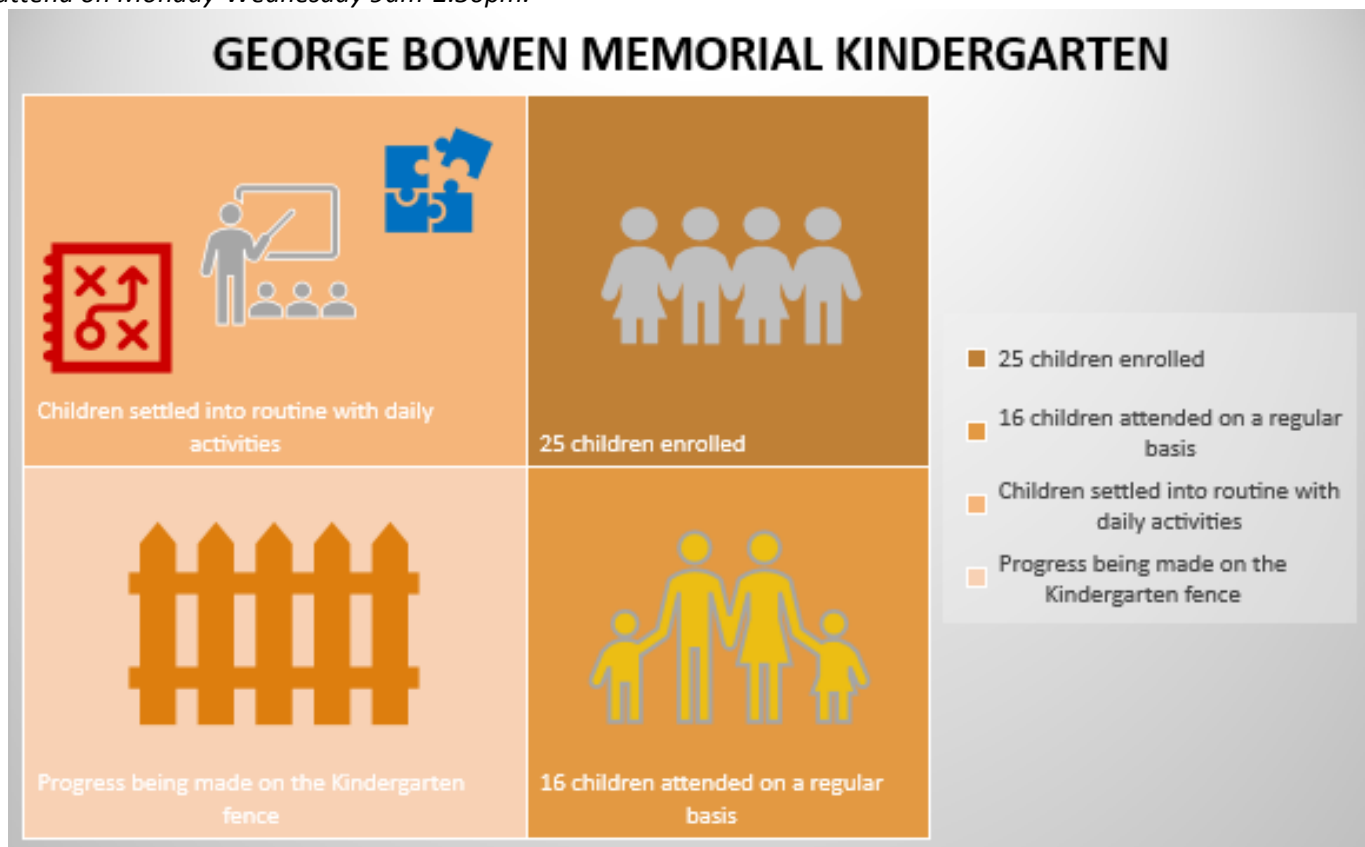
Nola's Place Child Care Centre is licensed for twenty – nine (29) children fulltime. (0 to 2 years – 8 and 2 to 5 years – 21).



23 children participate on a regular basis, with 33 children enrolled on a staggered attendance base.

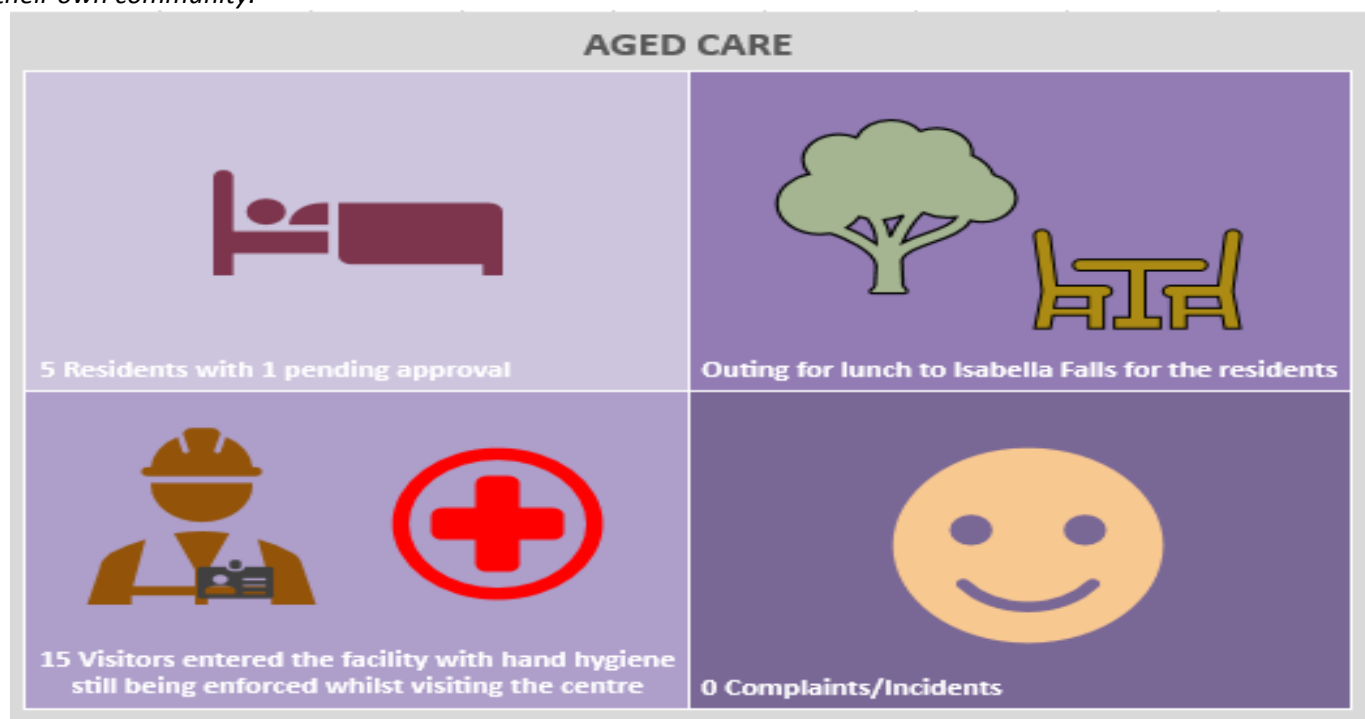
## George Bowen Memorial Kindergarten

George Bowen Memorial Kindergarten is licensed for twenty – five (25) children of Kindergarten age. The centre is currently regulated by the Education and Care Services National Law and the Education and Care Services National Regulations (National Regulations). The service receives Federal and State Government Funding. The children attend on Monday-Wednesday 9am-2.30pm.



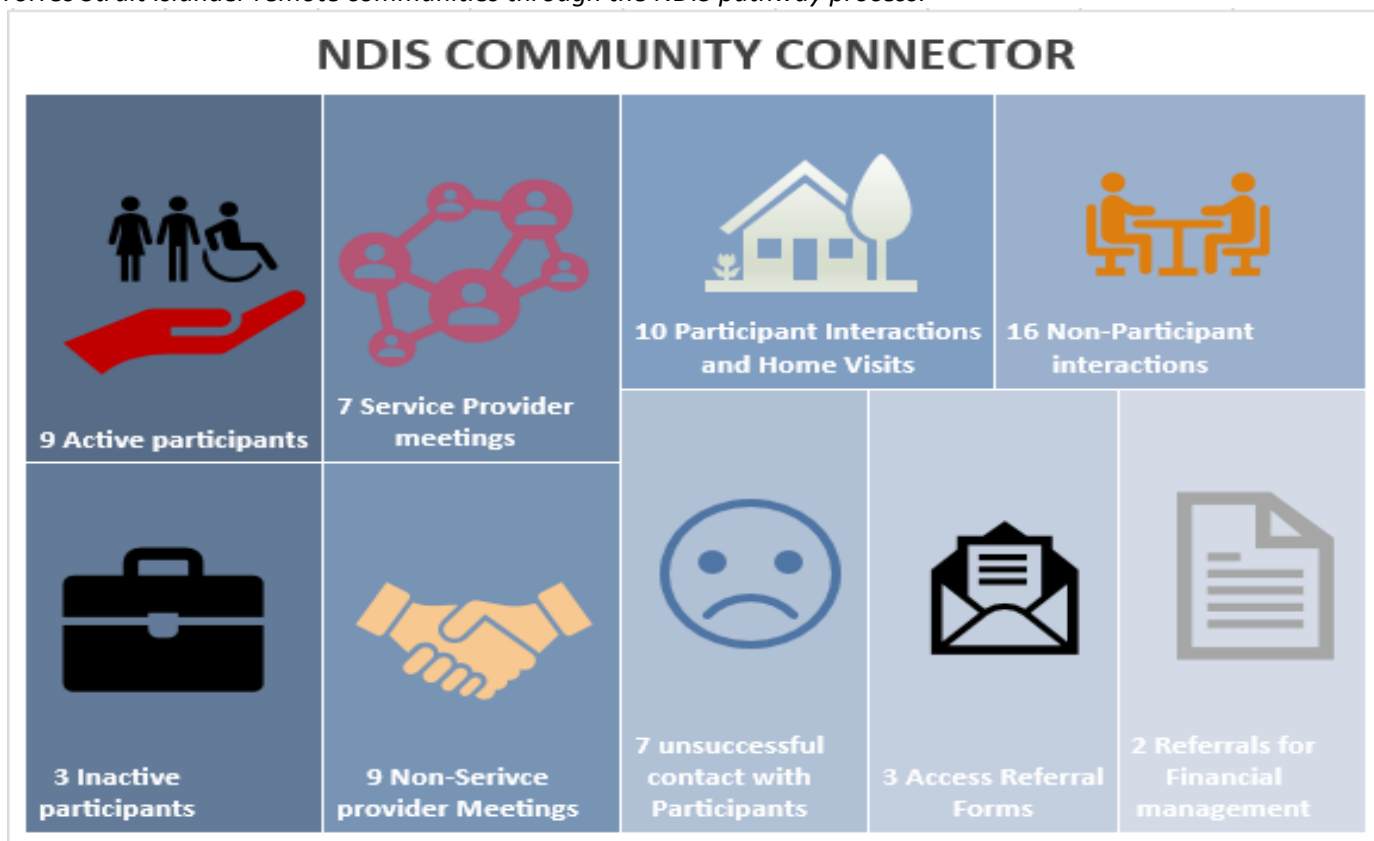
## Hope Vale Aged Care Hostel

The Aged Care Facility is regulated under the Aged Care Act 1997 and is federally funded. The Hostel is a 20-bed facility with occupancy levels fluctuating over the last 12 months between 5-14 residents. Our level of care has increased substantially, to include a higher level of care which support community members to age on country. The service boasts a fantastic and dedicated team of local staff providing culturally appropriate care to residents in their own community.



## NDIS Connector

The Remote Community Connector Program aims to “**engage, inform and assist**” people living in Aboriginal and Torres Strait Islander remote communities through the NDIS pathway process.



## Indigenous Knowledge Centre (IKC)

IKC Position description has been updated to include increased hours to 30 hours per week plus Information and Technology Study opportunities that will support the community in accessing services reliant on Digital Technologies.



## Hope Vale Communications and Media Centre

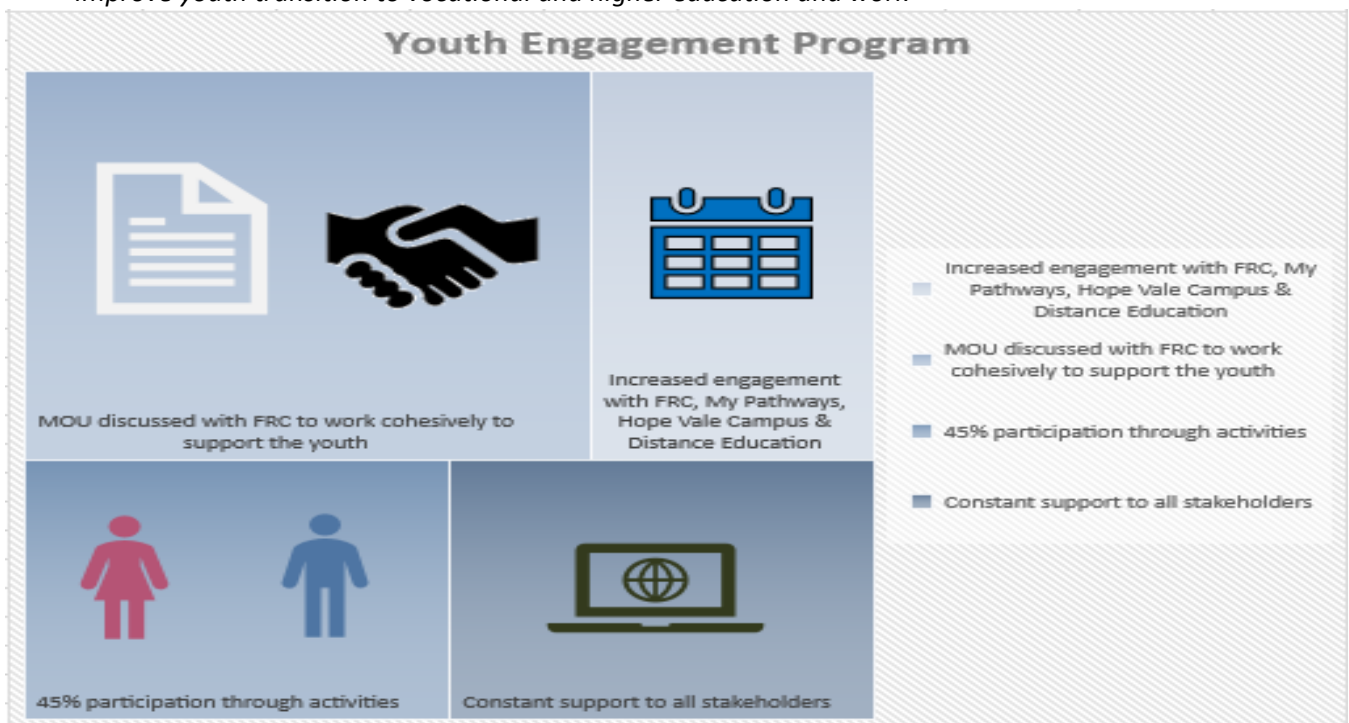
The Communications and Media Centre is funded by the Federal Government. Currently we have two (2) community people employed at the Radio Station – a senior broadcaster and a junior broadcaster.



## Youth Engagement Program

The Hope Vale Youth and Social Support Project is funded by the Federal Government to “Engage, Refer and Assist” Youth in our community. The team aims to:

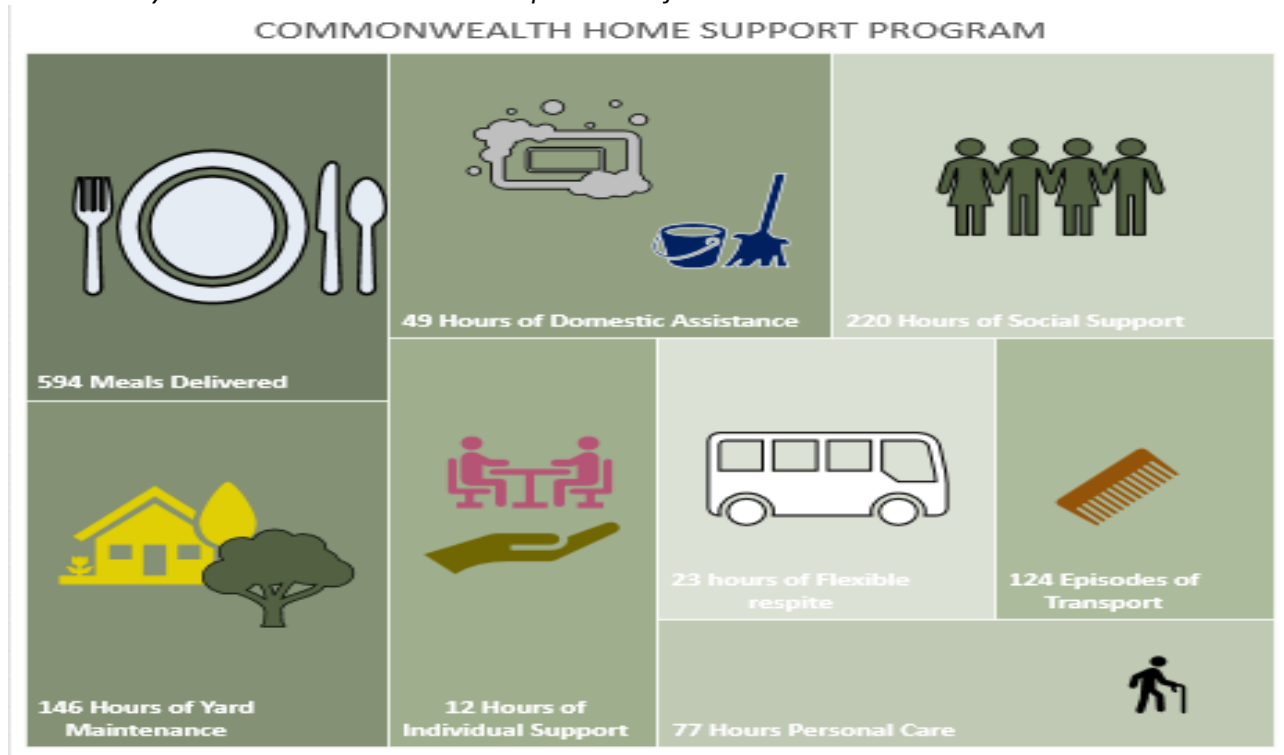
- Get children into school
- Improve educational outcomes including Year 12 attainment
- Improve youth transition to vocational and higher education and work



The role of Education Support Officer has been filled and will join the Youth Support Officer in youth engagement.

## Commonwealth Home Support Program (CHSP)

The Commonwealth Home Support Program helps the frail, older people living in Hope Vale to maximise their independence whilst still being able to live in their homes. This program is funded by the Federal Government and works closely with the State Government Department of Health.



CHSP Staff deliver services to over 45 CHSP Clients, 8 NDIS Clients and 3 Queensland Community Care Clients. 1 x Male Support Worker position has been filled. 1 x Female Support worker has been filled.

**Recommendation:** That Council notes the content of this report.

I wish to thank the Hope Vale Aboriginal Council for the opportunity to act as the interim Director of Social Services. I have had a very pleasant first three weeks. The CEO, Directors and all staff have been very supportive and positive. While I have a comprehensive background in the Aged Care Quality Standards and the NDIS Practice Standards I am familiarising myself with the National Quality Framework and am looking forward to the challenges and learnings that will ensue.

Sandi Churchill  
Director of Social Services