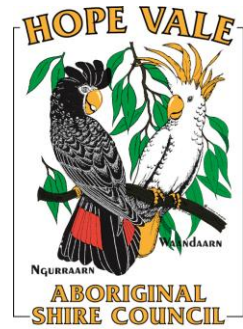


COUNCIL REPORT

Meeting: 28th July 2021



Summary of Meetings/Events Attended by Social Services Team to June 31st, 2021

- PCYC model discussion – QPS
- Work Experience – My Pathways
- Development of Governance Model - CYAAA
- Interagency meeting – DSDATSIP

Summary of Current Activities.

- Review of Continuous Improvement plan & QIP – Nola's Place Childcare Centre & George Bowen Memorial Kindergarten
- Development of Policy and Process for Transportation of children at Kindergarten and Childcare including: QLD transport, Licensing & Vehicle requirements – Vehicle has been modified to meet compliance needs and appropriate child restraints acquired. Policy Develop Draft completed review required – Being finalized(Delayed)
- Recruitment for the following positions is underway
 - 1 x Youth Support Officer (Youth Engagement Program) – interview process complete
 - Male Social Service Support Worker – Re-Advertised
- Nola's Childcare Centre Policies complete ready for endorsement
- Kindergarten National Workforce Census – Complete & Submitted
- Playschool Program proposal followed up with Department of Education

Other Actions in Progress

- Facilities Maintenance – Works orders and register are updated fortnightly to ensure the continuity of all compliance issues at all services
- CHSP policies being customised to our service
- Aged Care Policies are in review and being customised to our service
- Review of Quality Improvement Plan for Aged Care
- Information Systems update throughout Social Service Department
- New RCC Contract discussions with NDIS
- IKC Foyer Refurbishment

- 36 children enrolled at Nola's Place Childcare Centre
- 24 Students enrolled at George Bowen Memorial Kindergarten
- 7 Residents live at the Aged Care Hostel
- 61 clients received support services delivered by CHSP
- Interview process complete for Youth Support Officer to support in YEP
- 13 active NDIS Participants in community
- Due to the ongoing schedule of the radio, there is minimal change to report.
- 67 IKC members

Nola' Place Child Care Centre

Nola's Place Child Care Centre is licensed for twenty – nine (29) children fulltime.



27 children participate on a regular basis, with 33 children enrolled on a staggered attendance base.

Compliance Notice actions – Children's soft play area weeded, surface thermometer purchased for bicycle track, additional resources purchased, children's activity tables sanded back and restored, sanitary areas ensured they are always filled and ready to use & all staff undertook toolbox talk on Regulation 65 - Assessment and rating of new education and care services

George Bowen Memorial Kindergarten

George Bowen Memorial Kindergarten is licensed for twenty – five (25) children of Kindergarten age. The centre is currently regulated by the Education and Care Services National Law and the Education and Care Services National Regulations (National Regulations). The service receives Federal and State Government Funding. The children attend on Monday-Wednesday 9am-2.30pm.



Commonwealth Home Support Program (CHSP)

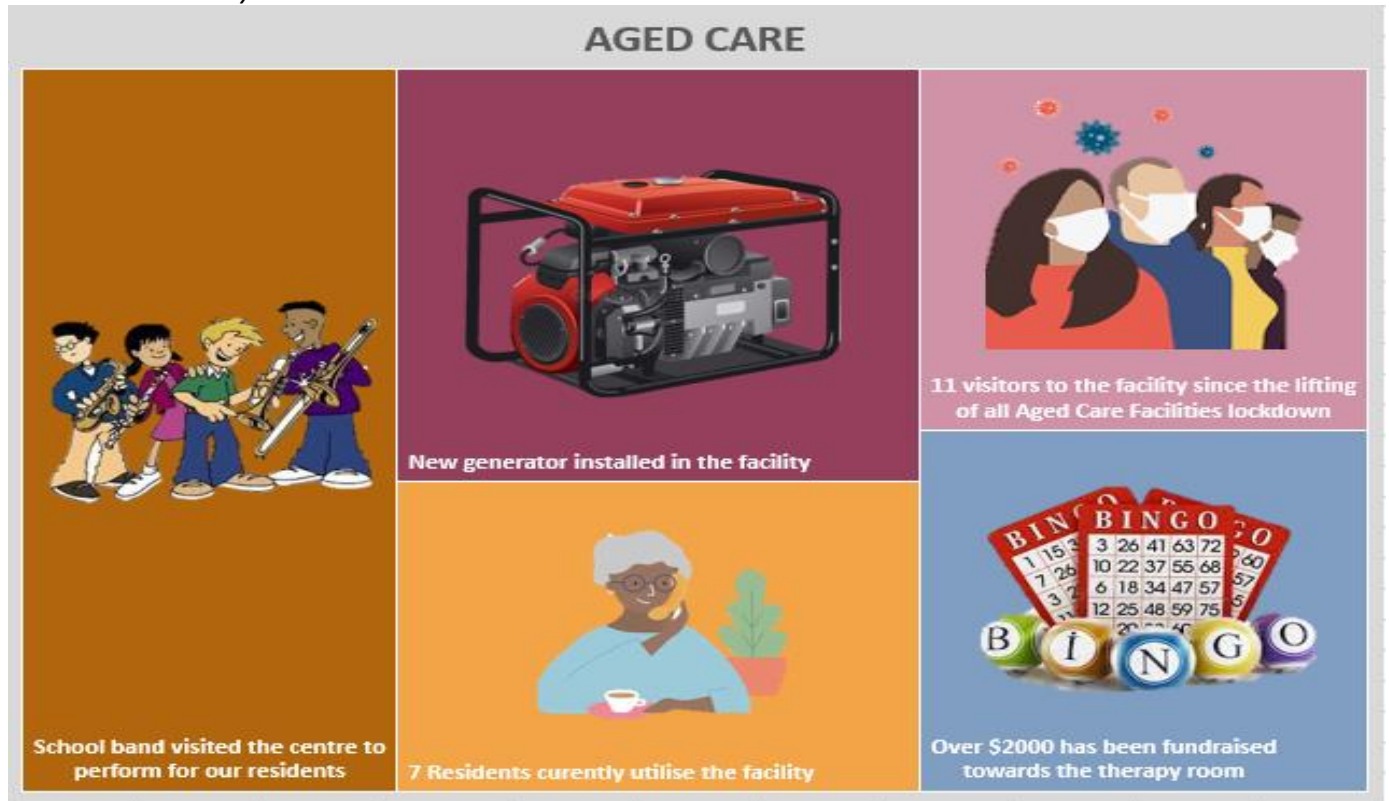
The Commonwealth Home Support Program helps the frail, older people living in Hope Vale to maximise their independence whilst still being able to live in their homes. This program is funded by the Federal Government and works closely with the State Government Department of Health.



CHSP Staff deliver services to over 45 CHSP Clients, 4 NDIS Clients and 3 Queensland Community Care Clients.

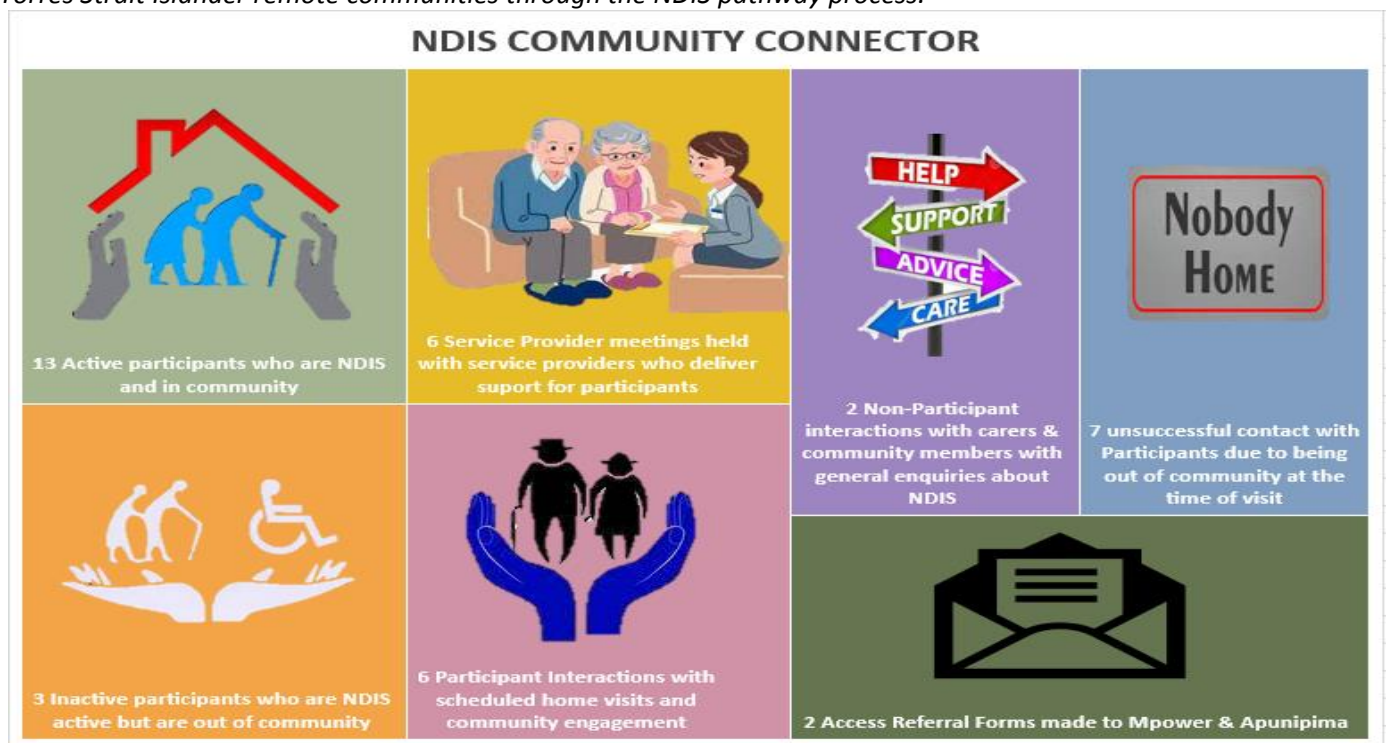
Hope Vale Aged Care Hostel

The Aged Care Facility is regulated under the Aged Care Act 1997 and is federally funded. The Hostel is a 20-bed facility with occupancy levels fluctuating over the last 12 months between 5-14 residents. Our level of care has increased substantially, to include a higher level of care which support community members to age on country. The service boasts a fantastic and dedicated team of local staff providing culturally appropriate care to residents in their own community.



NDIS Connector

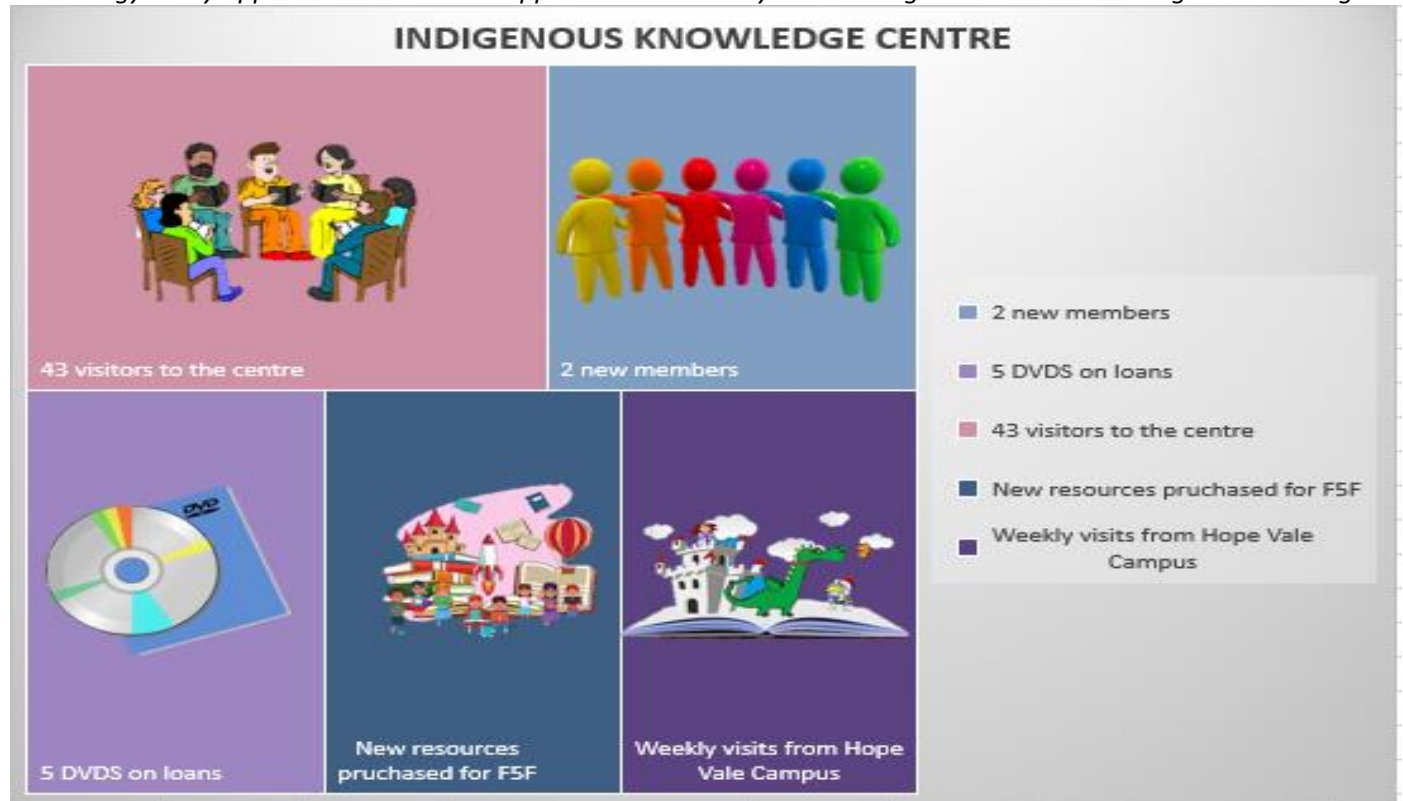
The Remote Community Connector Program aims to “**engage, inform and assist**” people living in Aboriginal and Torres Strait Islander remote communities through the NDIS pathway process.



NDIS Community Connector has undertaken a 1-day refresher training delivered by the NDIS team.

Indigenous Knowledge Centre (IKC)

IKC Position description has been updated to include increased hours to 30 hours per week plus Information and Technology Study opportunities that will support the community in accessing services reliant on Digital Technologies.



The IKC has seen drastic progress with the refurbishment of the front foyer area nearing completion. An Official Opening will be organised once all works are completed.

Hope Vale Communications and Media Centre

The Communications and Media Centre is funded by the Federal Government. Currently we have two (2) community people employed at the Radio Station – a senior broadcaster and a junior broadcaster.



The Radio station broadcasting team frequently request more local news and event information be shared with the team for promotion and advertisement.

Youth Engagement Program

The Hope Vale Youth and Social Support Project is funded by the Federal Government to "Engage, Refer and Assist" Youth in our community. The team aims to:

- Get youth into school
- Improve educational outcomes including Year 12 attainment
- Improve youth transition to vocational and higher education and work



Education Support Officer has been very active in all community events.

Recommendation:

That Council notes the content of this report.

Ashleigh Oberleuter
Social Services Team