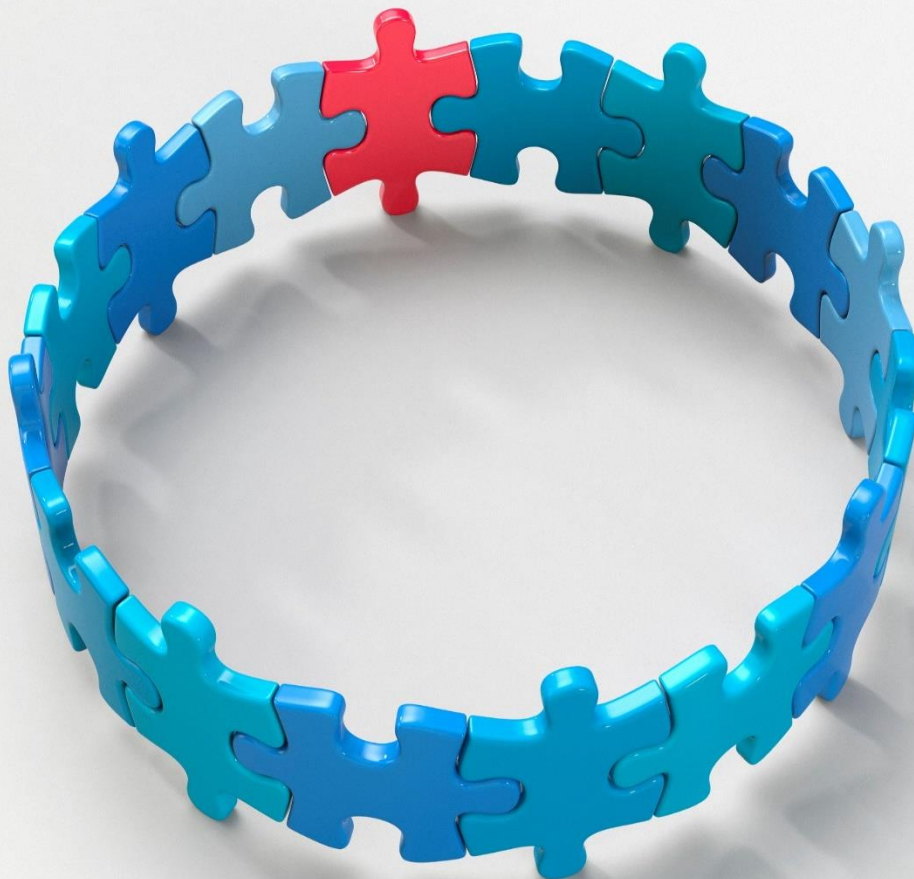
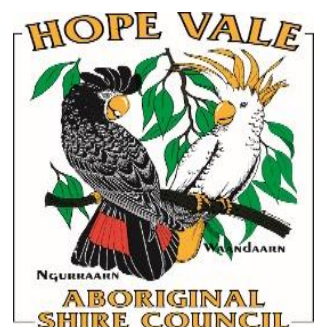


HUMAN RESOURCES REPORT DECEMBER 2021



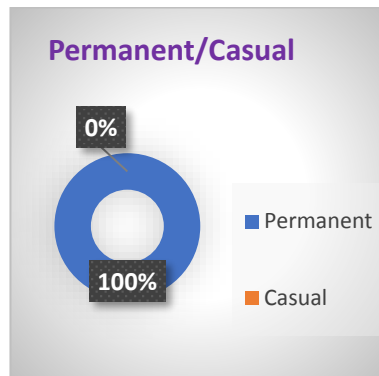
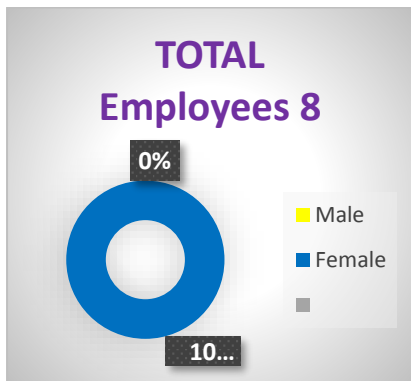
Report as of 30 November 2021

*Prepared by
Rani Johnson*



ADMINISTRATION DEPARTMENT

Employment Outlook



Professional Development	2
New Intake	0
Resignations	0
Absent Hours	13.50
Work Cover Claims	0

Average Leave Balances

Annual Leave	190.04 Hours	Sick Leave	369.96 Hours
Long Service Leave	313.94 Hours	Years of Service	9.25 Years

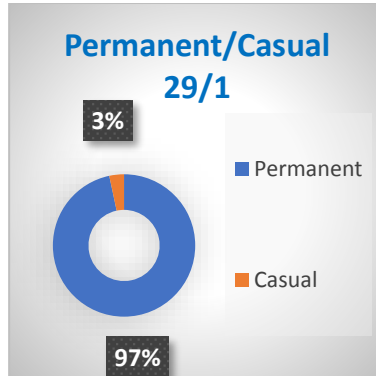
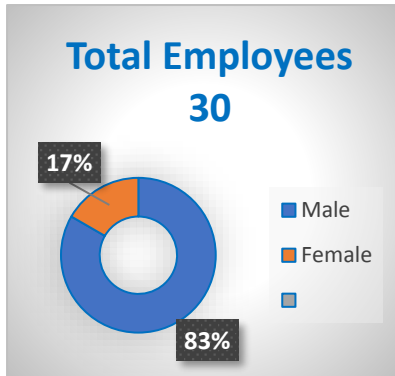
Leave taken for the Month of November 2021

Annual Leave	62.75 Hours	Sick Leave	108.75 Hours
Long Service Leave	4.50 Hours	LWOP*	34.25 Hours

**LWOP – Leave without pay*

OPERATIONS

Employment Outlook



Professional Development	14 Hours
New Intake	1
Resignations	0
Absent Hours	164 Hours
Work Cover Claims	1

Average Leave Balances

Annual Leave	124.33 Hours	Sick Leave	305.78
Long Service Leave	196.39 Hours	Years of Service	8.99 Years

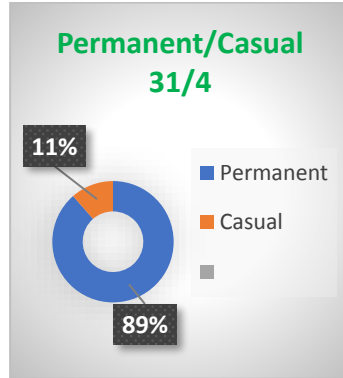
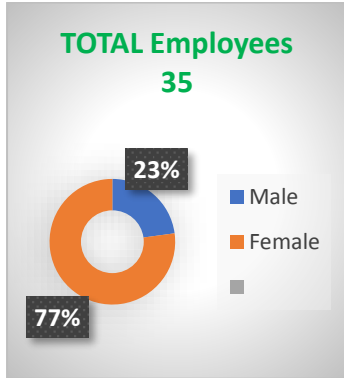
Leave taken for the Month of November 2021

Annual Leave	209.50 Hours	Sick Leave	387.75 Hours
Long Service Leave	34.00 Hours	LWOP*	31.25 Hours

**LWOP – Leave without pay*

SOCIAL SERVICES DEPARTMENT

Employment Outlook



Professional Development	77 Hours
New Intake	0
Resignation	0
Absent Hours	239 Hours
Work Cover Claims	1

=====

Average Leave Balances

Annual Leave	64.97 hours	Sick Leave	69.76 Hours
Long Service Leave	108.08hours	Years of Service	5.47 Years

=====

Leave taken for the Month of November 2021

Annual Leave	192.50 Hours	Sick Leave	377.50 Hours
Long Service Leave	0.00 Hours	LWOP *	273.25 Hours

**LWOP – Leave without pay*

