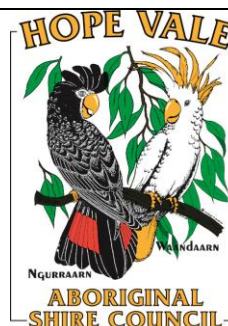


COUNCIL REPORT

Meeting: 20 January 2021

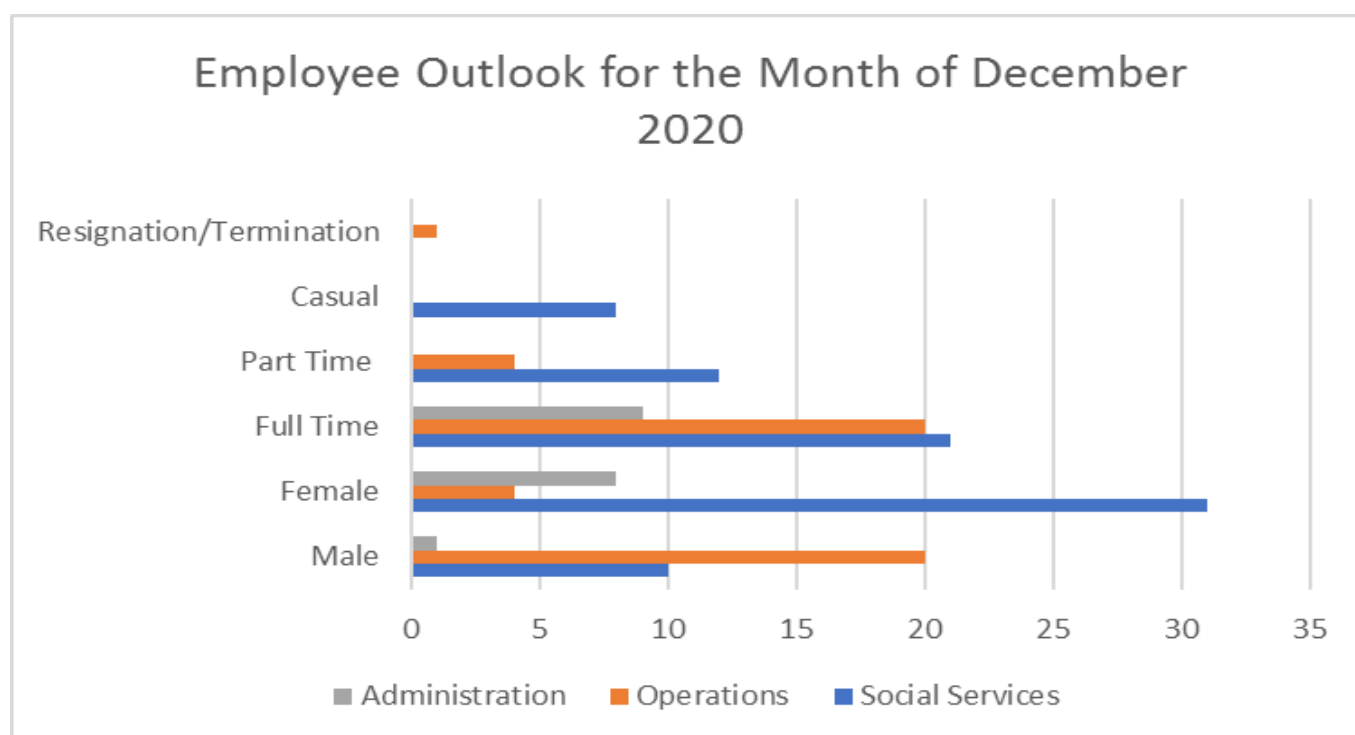


Item 1: Council Employment Outlook

Table 1 below shows the number of employees as at 30 December 2020. This is also reflected in the Chart below.

Table 1:

Section	Full Time	Part Time	Casual	Resignation/Terminated	Male	Female	Current
Social Services	21	12	8	0	10	31	41
Administration	9	0	0	0	1	8	9
Operations	20	4	0	1	20	4	24
Totals	50	16	8	2	31	43	74



Social Services

Currently have 3 Vacancies in:-

2 x CHSP Social Services Support Worker – Permanent Part Time Female

1 x CHSP Social Services Support Worker – Permanent Part Time Male

Operations

Currently has 2 Vacancies: -

1 x Warehouse Assistant

2 x Parks & Gardens Officers (To be advertised internally)

Administration

No current vacancies

Table 2 shows Ordinary, Overtime (incl Penalties), Insufficient Leave and absenteeism hours for the Month of November 2020.

Table 2:

November 2020 (Previous month)

Section	Ordinary Hours	Penalties Paid	Overtime hours	Insufficient hours	Absent Hours
Social Services	7,018	409	382.25	207.75	11
Administration	1,985	0	17.50	28	0
Operations	5,852	0	144.25	36	301.50

Table 3 shows Ordinary, Overtime, Penalties paid, Insufficient Leave and Absent hours for the month of December 2020.

Table 3:

December 2020

Section	Ordinary Hours	Penalties Paid	Overtime hours	Insufficient hours	Absent Hours
Social Services	3025	416	103.75	206.50	60.25
Administration	856.75	0	29.50	16	0
Operations	2017	0	43	51	104

Absenteeism

Below figures shows the percentage of absenteeism per department for December 2020 compared to November 2020.

November

Social Services – 0.15%
Administration – 0%
Operations – 5.15% %

December

Social Services – 0.01%
Administration – 0%
Operations – 0.05%

Overtime

Below figures show the percentage of overtime and penalty hours paid per department for the month of December 2020 compared to November 2020. Figures taken from Table 2 & 3.

November

Social Services – 11.27%
Administration – 0.88%
Operations – 2.46%

December

Social Services – 0.03%
Administration – 0.03%
Operations – 0.02%

Table 4:

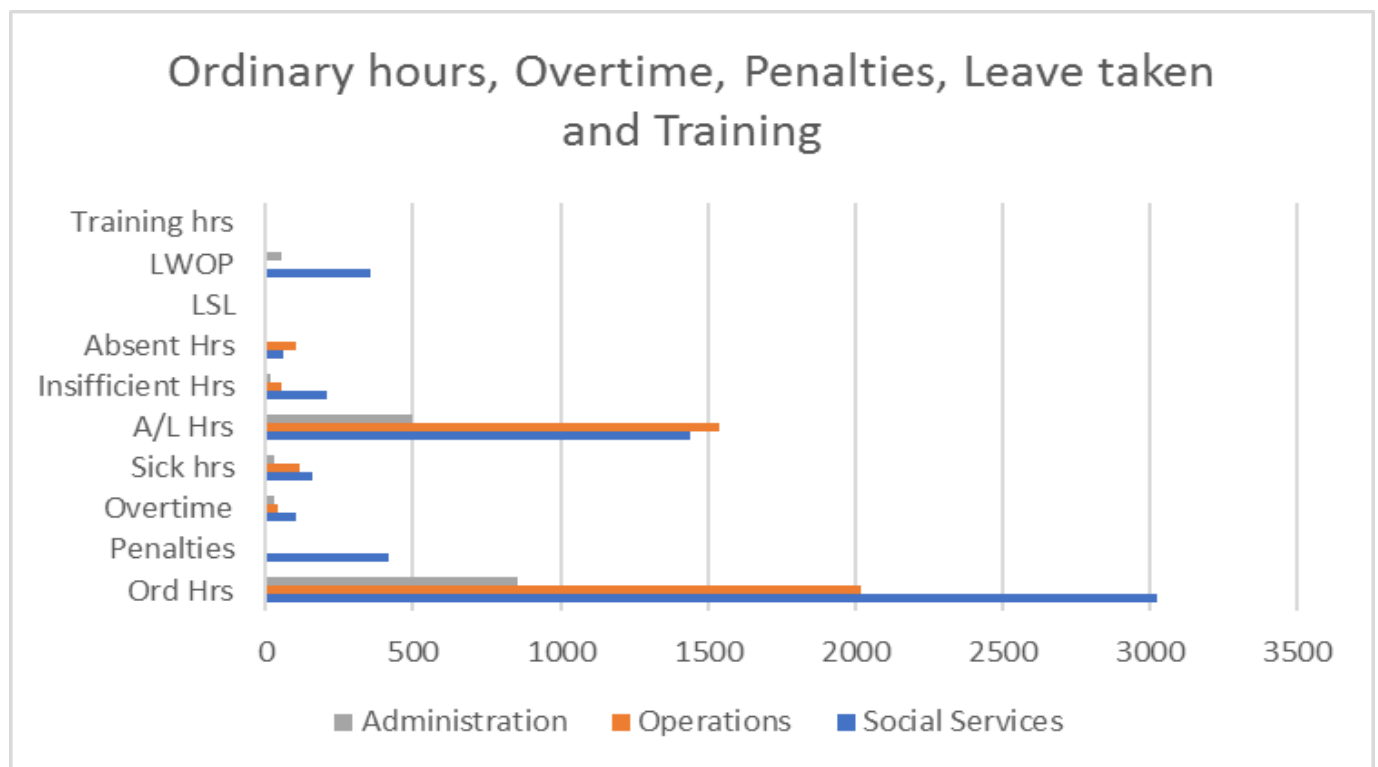
Table 4 and 4(a) below shows all other leave hours for November 2020 compared to December 2020.

Section	Sick Hours		A/L Hours		Long Service Leave		Compassionate Leave	
	December	Nov	Dec	Nov	Dec	Nov	Dec	Nov
Months								
Social Services	156.75	288.50	1441	455.50	0	0	0	93.25
Administration	30.25	149.25	497.50	137.50	0	117	0	0
Operations	117.25	247	1541.75	283.50	0	36.25	0	12.25

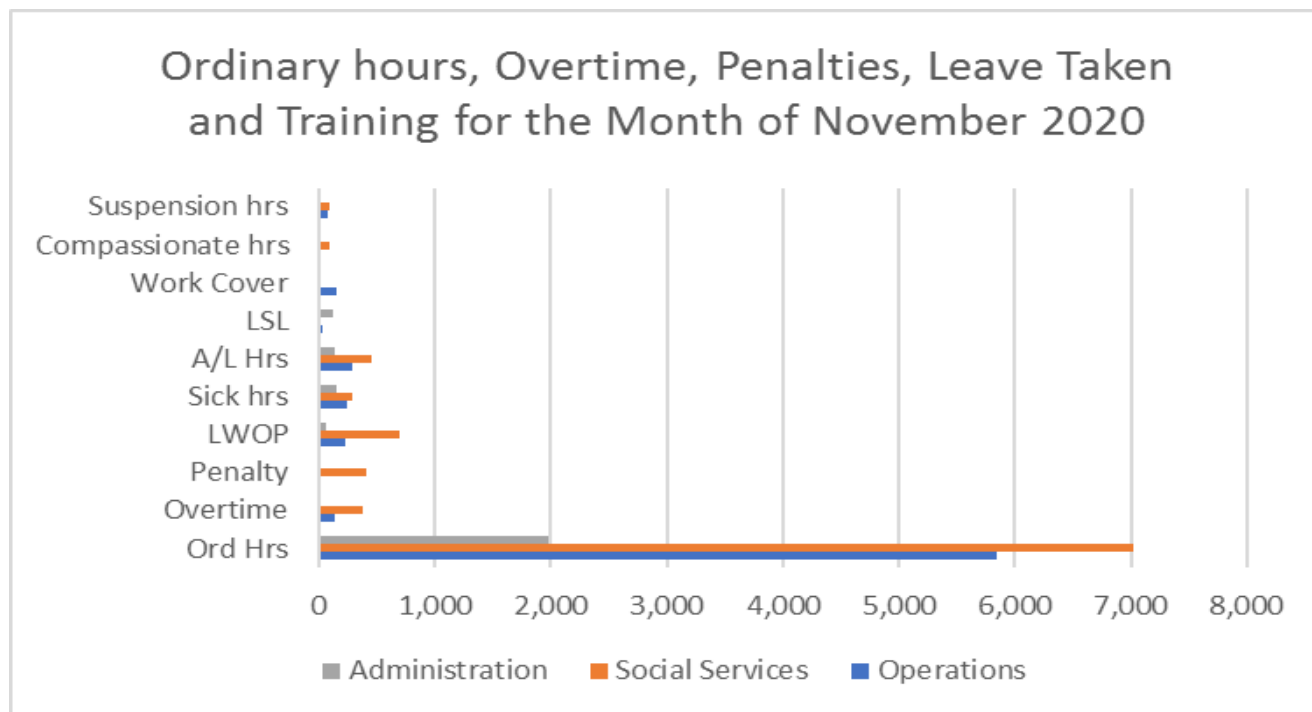
Table 4(a):

Section	Insufficient/LWOP & Absenteeism		Training Hours	
	December	Nov	December	Nov
Years				
Social Services	622.25	912.75	0	107
Administration	68.25	83.25	0	8
Operations	155	568.25	0	0

Below graphs show the amount of Ordinary hours, Overtime & Penalties worked, and Leave taken for the month of December 2020.



Below graph shows the same for the previous Month.



No new Workers Compensation claim for the month of November 2020.

R.Johnson

Rani Johnson